

| POSITION | DESIGNATION | DESCRIPTION |
|---------------------|--------------|---|
| FRONT VIEW OF PANEL | | |
| 1 | PNH | PROTECTION NOT HEALTHY LAMP |
| 2 | CB L/O | CIRCUIT BREAKER LOCK OUT INDICATION |
| 3 | CB OPEN | CIRCUIT BREAKER OPEN INDICATION |
| 4 | CB CLOSE | CIRCUIT BREAKER CLOSE INDICATION |
| 5 | S-CHARGE | SPRING CHARGE INDICATION |
| 6 | RACKED | RACKED IN INDICATION |
| 7 | ES OPEN | EARTH SWITCH OPEN INDICATION |
| 8 | ES CLOSE | EARTH SWITCH CLOSE INDICATION |
| 9 | LAMP TEST | LAMP TEST PUSH BUTTON |
| 10 | RESET | RESET PUSH BUTTON |
| 11 | P/INDICATION | PHASE INDICATION |
| 12 | 7SR11 | OVERCURRENCTION FEEDER PROTECTION RELAY |
| 13 | 1S20 | ARC FLASH PROTECTION |
| 14 | LOCAL/REMOTE | LOCAL REMOTE SWITCH |
| 15 | TRIP/ CLOSE | TRIP/ CLOSE SWITCH |
| 16 | AMP-RED | AMMETER FOR RED PHASE |
| 17 | AMP-WHITE | AMMETER FOR WHITE PHASE |
| 18 | AMP-BLUE | AMMETER FOR BLUE PHASE |
| 19 | V | VOLTMETER |
| 20 | E-STOP | EMERGENCY STOP BUTTON |
| 21 | PENDANT | PENDANT SWITCH |
| 22 | CTTB | CURRENT TRANSFORMER TEST BLOCK |
| 23 | VTTB | VOLTAGE TRANSFORMER TEST BLOCK |
| 24 | VT SELECT | VOLTAGE TRANSFORMER SELECTOR SWITCH |
| REAR VIEW OF PANEL | | |
| X1: | | |
| X2: | | |
| X3: | | |

- NOTE:
1. 1U = 44.45mm
 2. THE SCHEME IS DESIGNED FOR MOUNTING A 19 INCH RACK SYSTEM AS PER IEC 60297 THE MODULE AND BACK PLATE ARE 482.6mm WIDE. THE MODULE IS 600mm DEEP.
 3. DRAWING ARE DEVELOPED BASED ON CURRENT TECHNOLOGY, PLEASE CONTACT TECHNOLOGY MANAGEMENT FOR SITE SPECIFIC INFORMATION.
 4. MANUFACTURE TO SUPPLY AS WIRED DRAWINGS SHOWING ALL CONNECTIONS.
 5. IS DESIRED THAT EACH TERMINAL STRIP TO HAVE ATLEAST FOUR(4) SPARE CONNECTION POINTS.

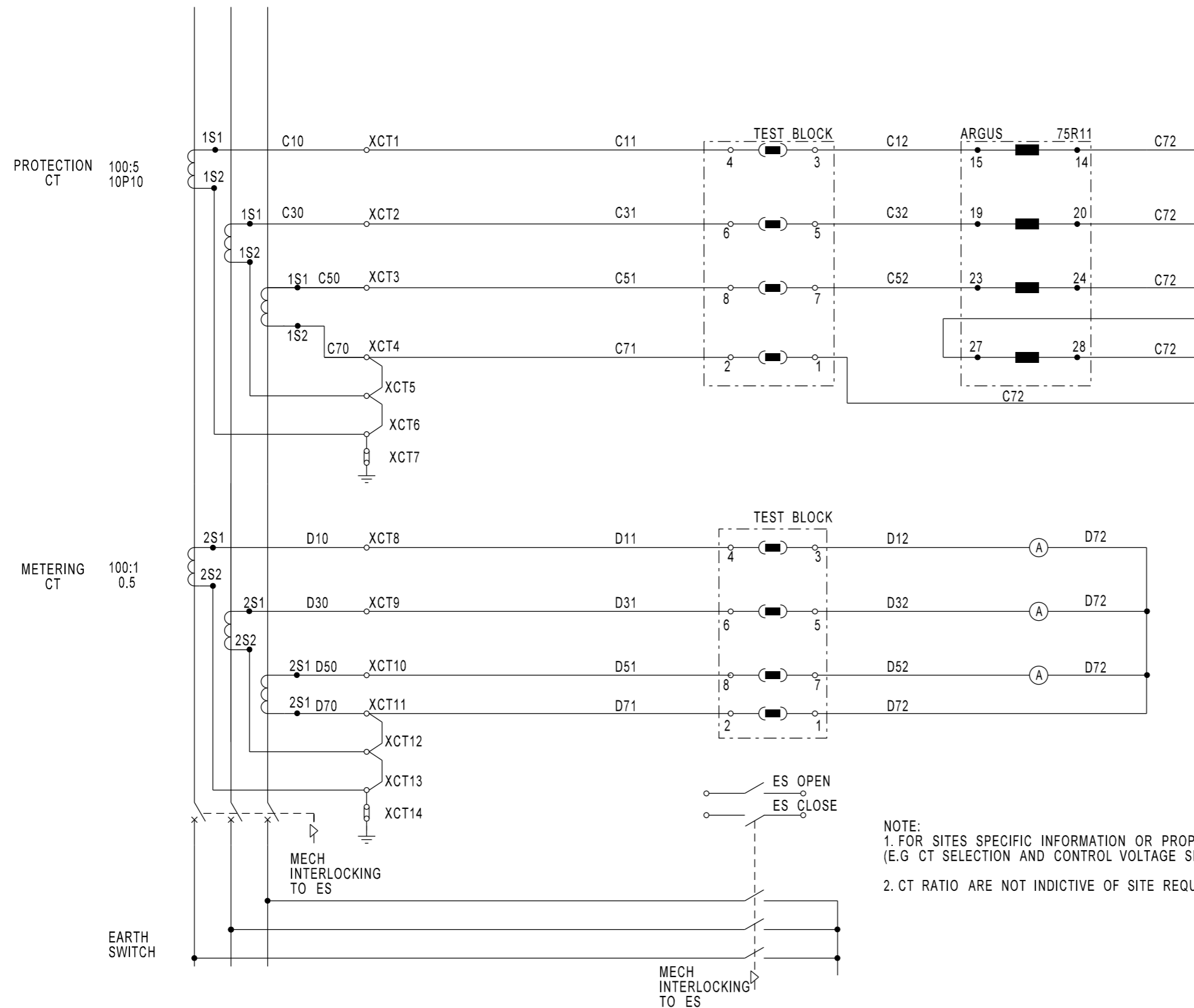
© COPYRIGHT PROTECTED. PREPARED BY CENTRAL DRAWING OFFICE

DIMENSIONS : mm SCALE : -
 TOLERANCE : LIN± - ANG± - ITEM NO : -
 MATERIAL : -
 VERSION INFO : NEW DRAWING

DO REF : CDO/ E0980
 CP REF : -
 DRAWN : L.S KEKANE
 DESIGNED : -
 CHECKED : X.R BHOMELA

DATE:
 APPROVED: H. KEKANA
 AUTHORIZED: Y. CHETTY

11KV FEEDER RELAY
 PANEL EQUIPMENT LAYOUT



NOTE:
 1. FOR SITES SPECIFIC INFORMATION OR PROPOSED TECHNOLOGIES, PLEASE CONTACT TECHNOLOGY MANAGEMENT (E.G CT SELECTION AND CONTROL VOLTAGE SELECTION).
 2. CT RATIO ARE NOT INDICATIVE OF SITE REQUIREMENT AND ARE DONE FOR ILLUSTRATION PURPOSES.

© COPYRIGHT PROTECTED. PREPARED BY CENTRAL DRAWING OFFICE

DIMENSIONS : mm SCALE : -
 TOLERANCE : LIN± - ANG± - ITEM NO : -
 MATERIAL : -
 VERSION INFO : NEW DRAWING

DO REF : CDO/ E0980
 CP REF : -
 DRAWN : L.S KEKANE
 DESIGNED : -
 CHECKED : X.R BHOMELE

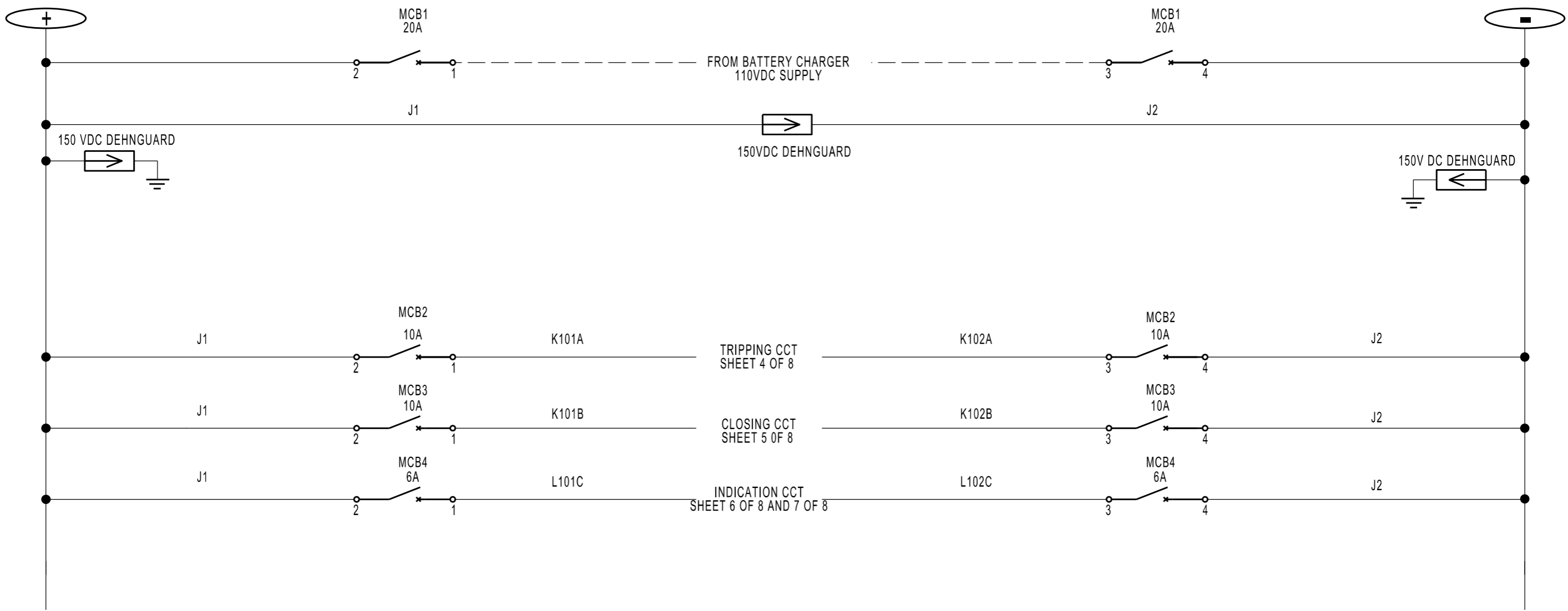
DATE:

APPROVED: H. KEKANA
 AUTHORIZED: T. CHETTY

11KV FEEDER LAYOUT SCHEME

TRANSNET
 rail infrastructure manager

BBH8347 SHT 2 OF 8
 VERSION 2 A3




© COPYRIGHT PROTECTED. PREPARED BY CENTRAL DRAWING OFFICE

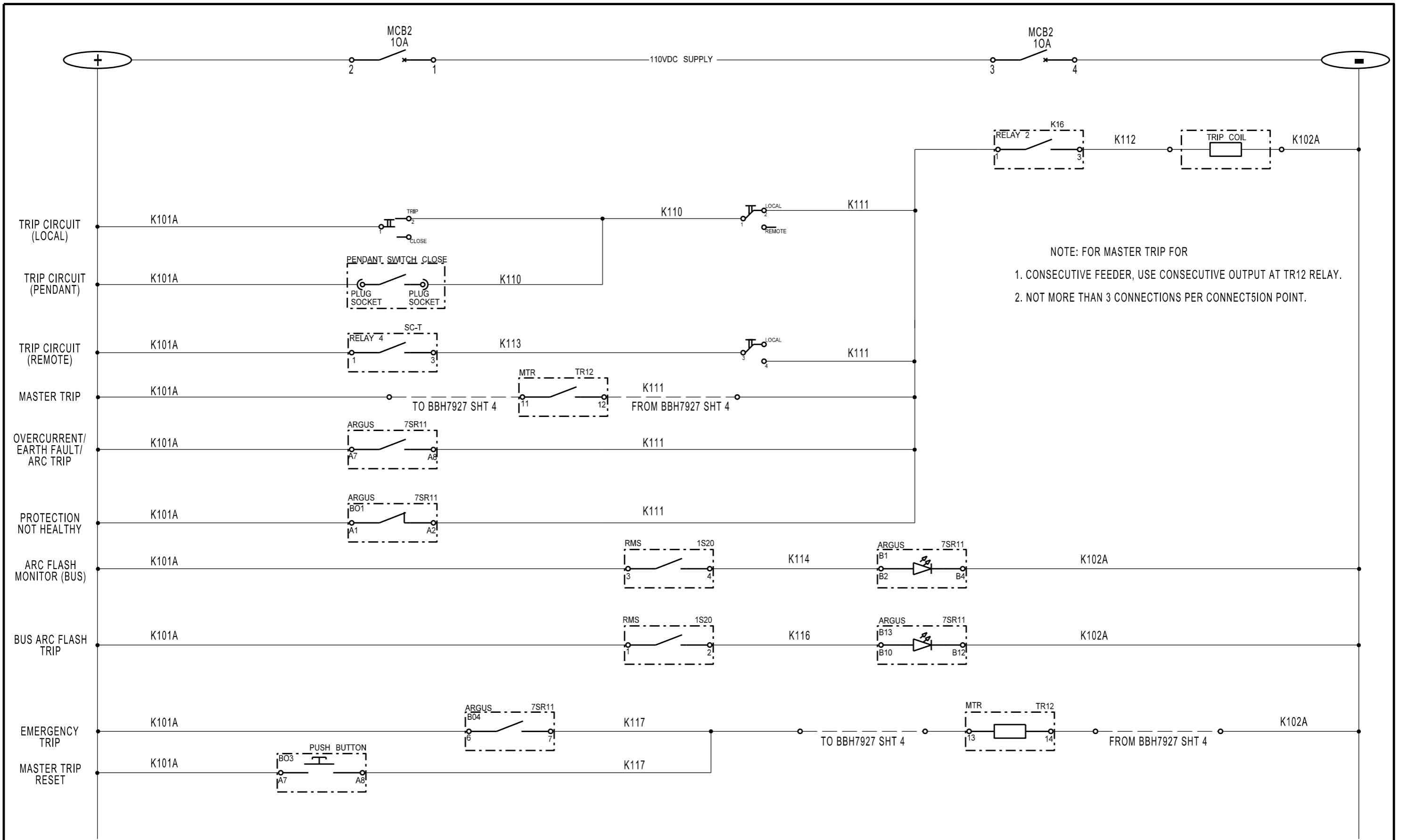
| | | | |
|--------------|-----------------|---------|-----|
| DIMENSIONS | : mm | SCALE | : - |
| TOLERANCE | : LIN± - ANG± - | ITEM NO | : - |
| MATERIAL | : - | | |
| VERSION INFO | : NEW DRAWING | | |

| | |
|----------|----------------|
| DO REF | : CDO/ E0980 |
| CP REF | : - |
| DRAWN | : L.S. KEKANE |
| DESIGNED | : - |
| CHECKED | : X.R. BHOMELA |

DATE:
 APPROVED: H. KEKANA
 AUTHORIZED: V. CHETTY

**11KV FEEDER
110V SUPPLY AND PROTECTION**


TRANSNET
 rail infrastructure manager
BBH8347 SHT 3 OF 8
 VERSION 1 A3



NOTE: FOR MASTER TRIP FOR
 1. CONSECUTIVE FEEDER, USE CONSECUTIVE OUTPUT AT TR12 RELAY.
 2. NOT MORE THAN 3 CONNECTIONS PER CONNECTION POINT.

© COPYRIGHT PROTECTED. PREPARED BY CENTRAL DRAWING OFFICE

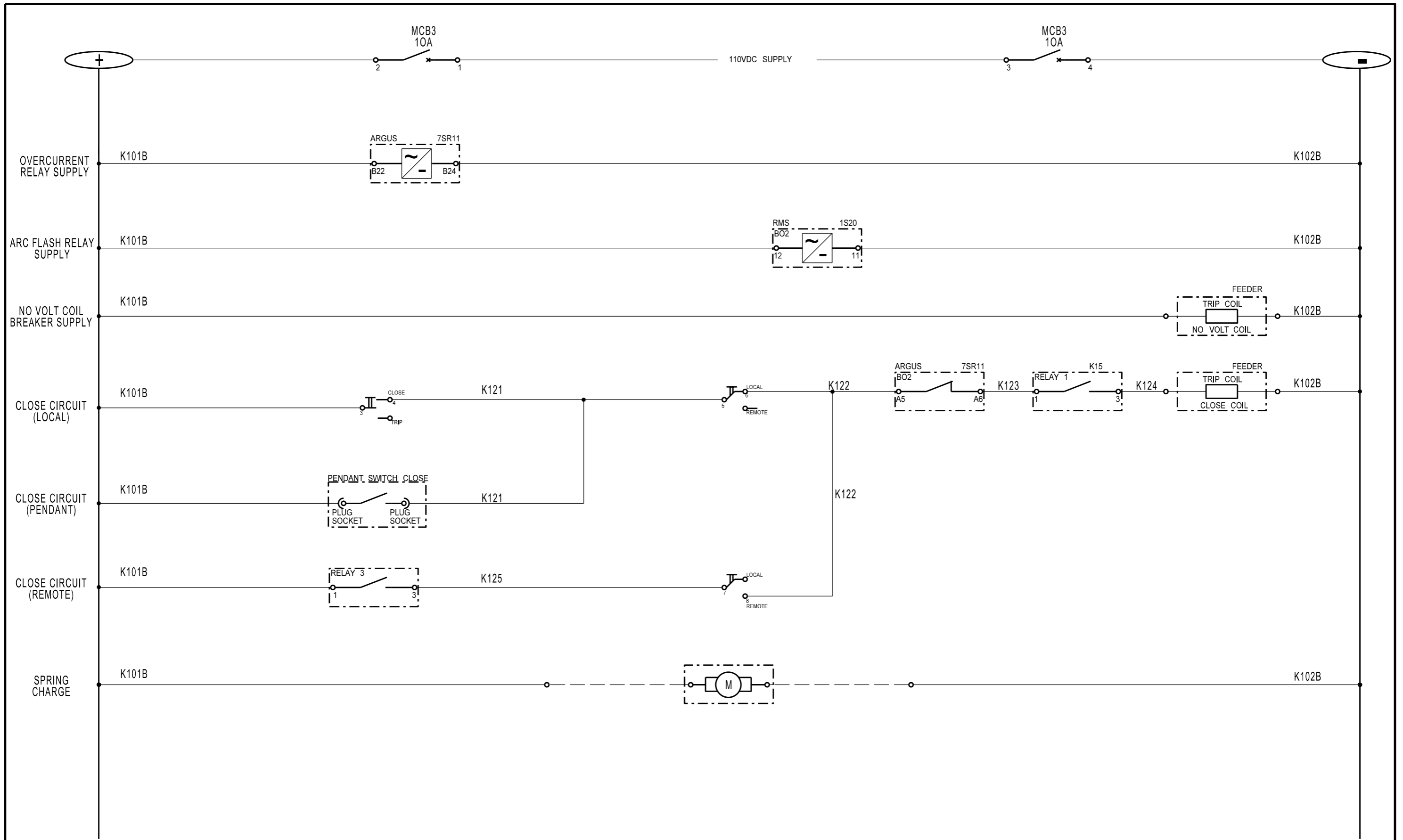
DIMENSIONS : mm SCALE : -
 TOLERANCE : LIN± - ANG± - ITEM NO : -
 MATERIAL : -
 VERSION INFO : NEW DRAWING

DO REF : CDO/ E0980
 CP REF : -
 DRAWN : L.S. KEKANE
 DESIGNED : -
 CHECKED : X.R. BHOMELA

DATE:
 APPROVED: H. KEKANA
 AUTHORISED: T. CHETTY

11KV FEEDER TRIPPING CIRCUIT

TRANSNET
 rail infrastructure manager
 BBH8347 SHT 4 OF 8
 VERSION 1 A3



© COPYRIGHT PROTECTED. PREPARED BY CENTRAL DRAWING OFFICE

DIMENSIONS : mm SCALE : -
 TOLERANCE : LIN± - ANG± - ITEM NO : -
 MATERIAL : -
 VERSION INFO : NEW DRAWING

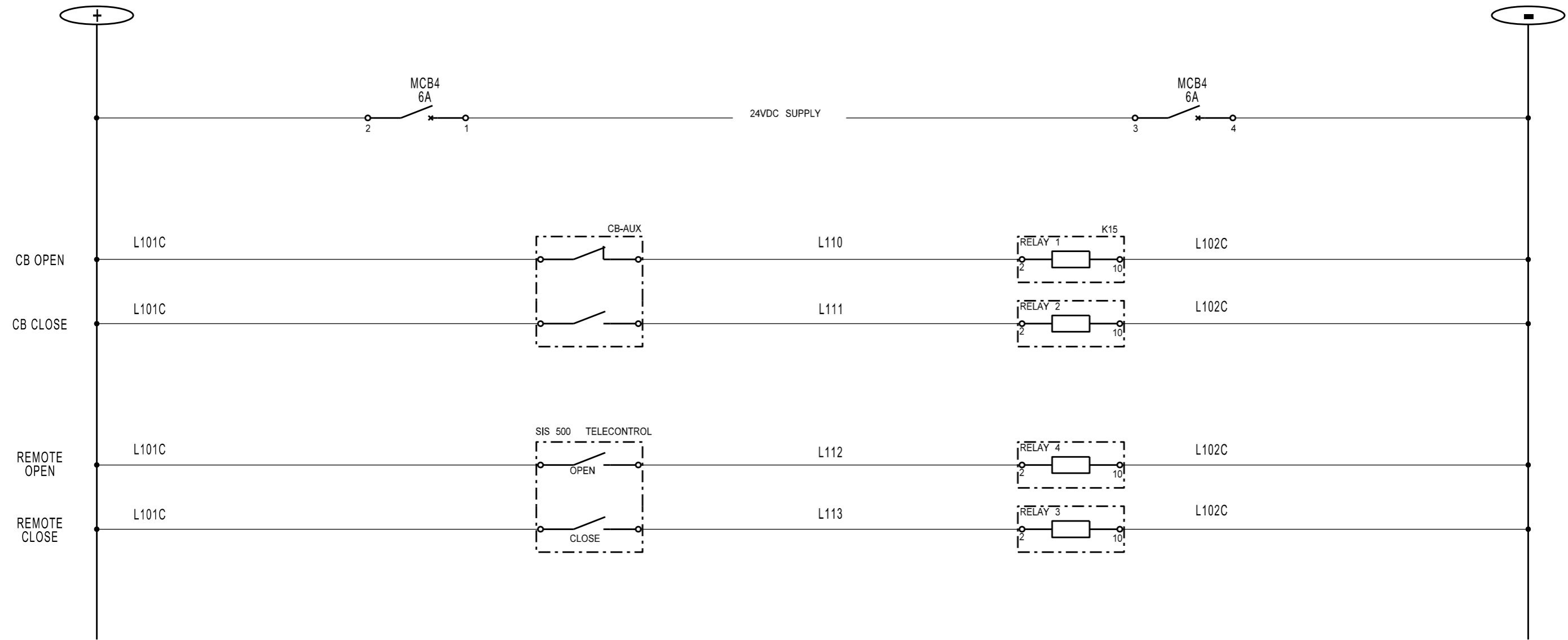
DO REF : CDO/ E0980
 CP REF : -
 DRAWN : L.S KEKANE
 DESIGNED : -
 CHECKED : X.R BHOMELE

DATE:
 APPROVED: H. KEKANA
 AUTHORIZED: CHETTY

11KV FEEDER
 110V SUPPLY AND CLOSING CIRCUIT



BBH8347 SHT 5 OF 8
 VERSION 2 A3



© COPYRIGHT PROTECTED. PREPARED BY CENTRAL DRAWING OFFICE

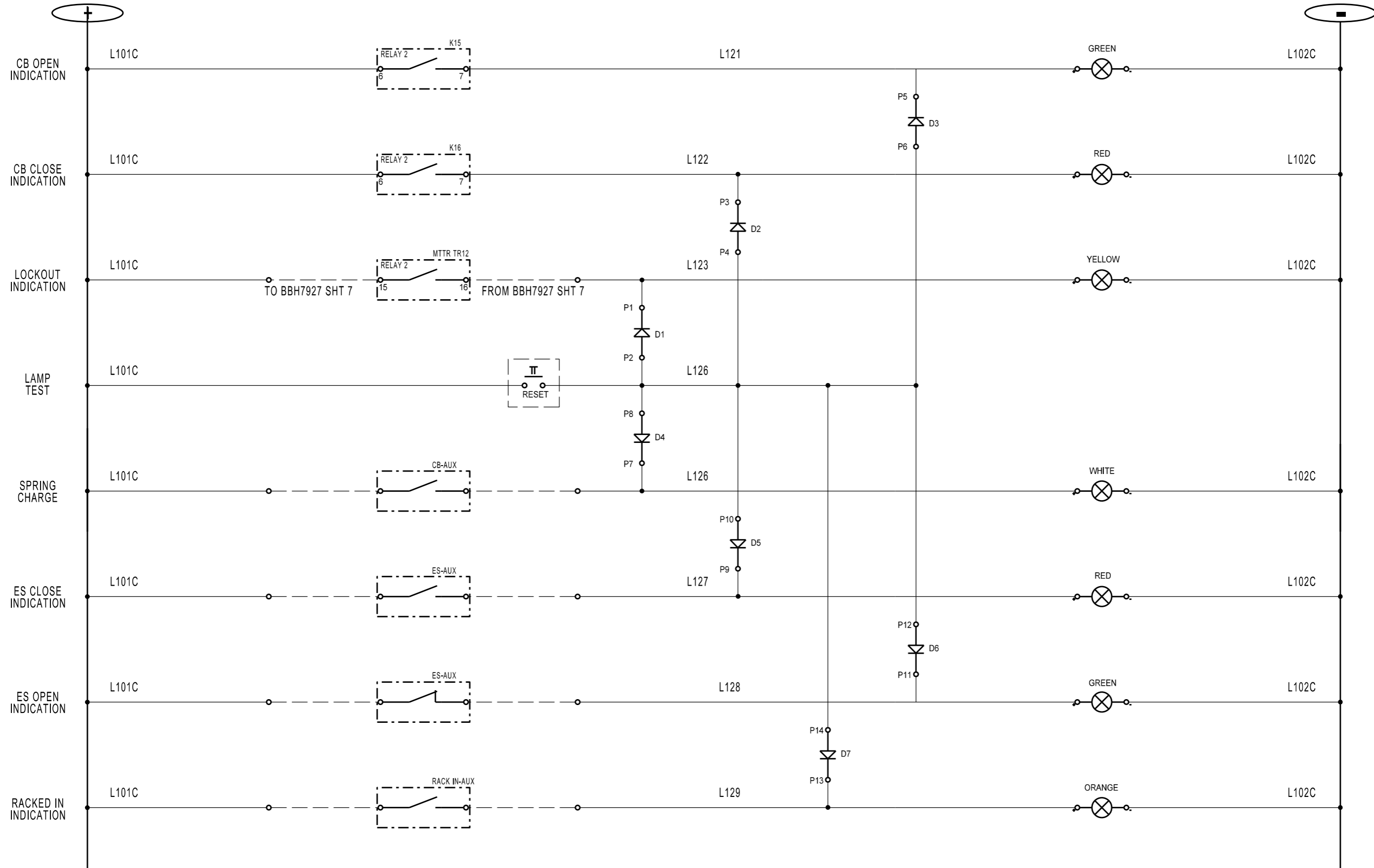
DIMENSIONS : mm SCALE : -
 TOLERANCE : LIN± - ANG±- ITEM NO : -
 MATERIAL : -
 VERSION INFO : NEW DRAWING

DO REF : CDO/ E0980
 CP REF : -
 DRAWN : L.S. KEKANE
 DESIGNED : -
 CHECKED : X.R. BHOMELA

DATE: *[Signature]*
 APPROVED: H. KEKANA
 AUTHORIZED: T. CHETTY

11KV FEEDER
 INDICATION CIRCUIT

TRANSNET
 rail infrastructure
 manager
 BBH8347 SHT 6 OF 8
 VERSION 1 A3



© COPYRIGHT PROTECTED. PREPARED BY CENTRAL DRAWING OFFICE

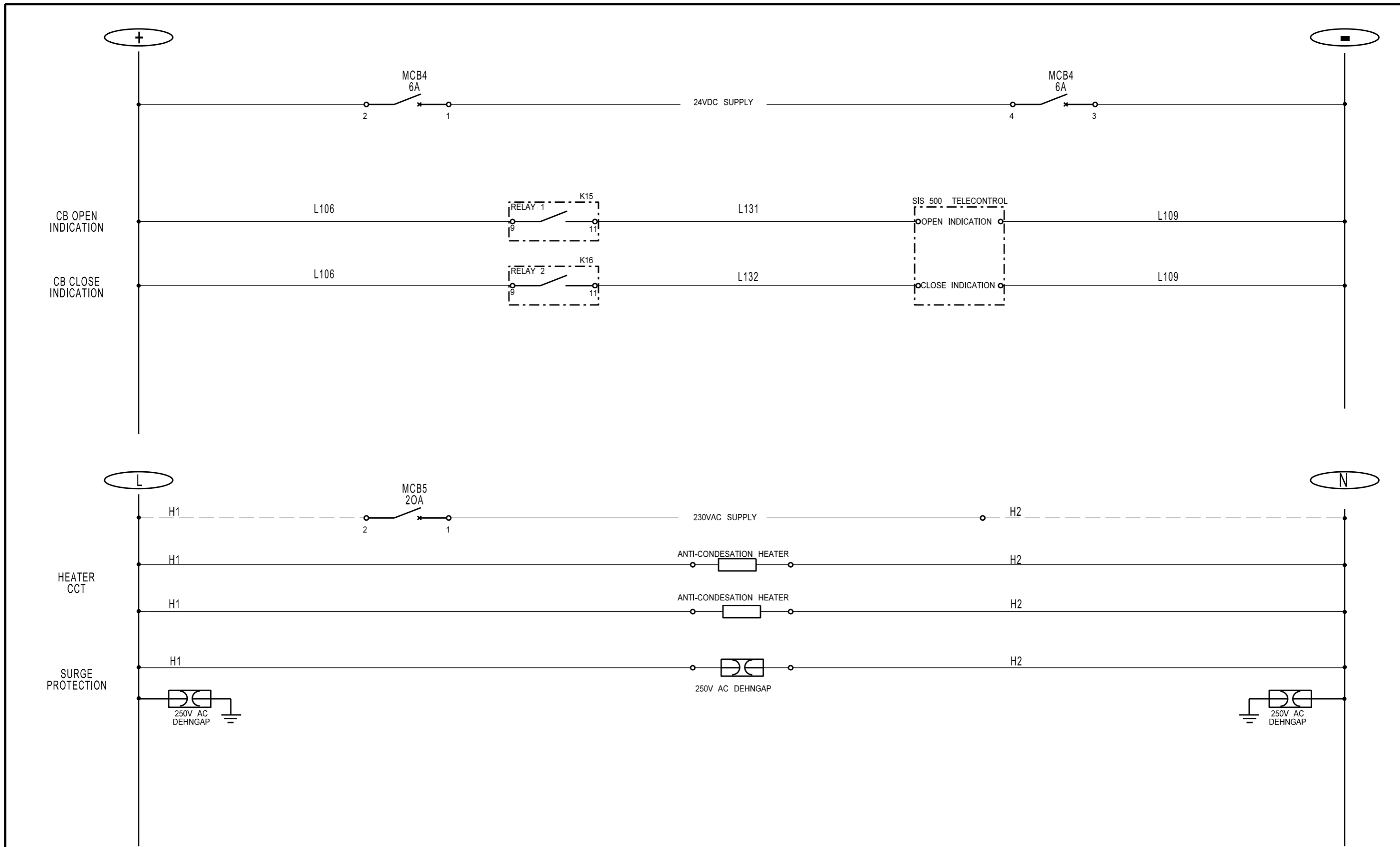
DIMENSIONS : mm SCALE : -
 TOLERANCE : LIN± - ANG± - ITEM NO : -
 MATERIAL : -
 VERSION INFO : NEW DRAWING

DO REF : CDO/ E0980
 CP REF : -
 DRAWN : L.S. KEKANE
 DESIGNED : -
 CHECKED : X.R. BHOMELA

DATE: *[Signature]*
 APPROVED: H. KEKANA
 AUTHORISED: T. CHETTY

11KV FEEDER
 INDICATION AND AUXILLIARY CIRCUITS

TRANSNET
 rail infrastructure
 manager
 BBH8347 SHT 7 OF 8
 VERSION 2 A3



© COPYRIGHT PROTECTED. PREPARED BY CENTRAL DRAWING OFFICE

DIMENSIONS : mm SCALE : -
 TOLERANCE : LIN± - ANG± - ITEM NO : -
 MATERIAL : -
 VERSION INFO : NEW DRAWING

DO REF : CDO/ E0980
 CP REF : -
 DRAWN : L.S. KEKANE
 DESIGNED : -
 CHECKED : X.R. BHOMELA

DATE: *[Signature]*
 APPROVED: H. KEKANA
 AUTHORISED: T. CHETTY

11KV FEEDER
 INDICATION AND AUXILLIARY CIRCUITS



BBH8347 SHT 8 OF 8
 VERSION 1 A3